

# Official Special District Ballot

## Klamath County, OR

### May 18, 2021

#### Instructions to Voter

Use a **BLUE** or **BLACK** pen to fill in the oval to the left of your choice.

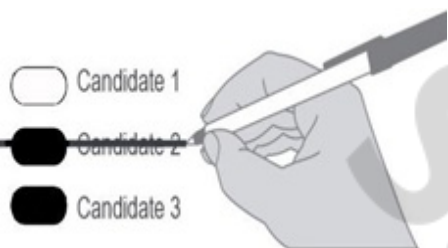
To write in a name that is not listed on the ballot, fill in the oval to the left of the write-in line.

Do not use White Out on ballot.

It is not required to vote all contests, your ballot will still be valid.

Questions? (541) 883-5134.

#### How to Correct a Mistake



#### Klamath Community College

**Director, Zone 7, At Large**  
Vote for One

- Richard Harrington
- Kaitlin Hakanson
- Steven Morton
- Jason R Flowers
- \_\_\_\_\_  
Write-In

#### Klamath County School District

**Director, Zone 2**  
Vote for One

- Laura Blair
- Robert (Bob) Moore
- \_\_\_\_\_  
Write-In

**Director, Zone 3**  
Vote for One

- Leticia Hill
- Jon Hobbs
- Marc Staunton
- Sandy deJong
- \_\_\_\_\_  
Write-In

#### Klamath County School District

**Director, Zone 5**  
Vote for One

- Jack L Himelwright
- Jill O'Donnell
- Ryan Rainville
- \_\_\_\_\_  
Write-In

#### Klamath County Fire District #1

**Director, Position 1**  
Vote for One

- Dennis Thomas
- \_\_\_\_\_  
Write-In

**Director, Position 4**  
Vote for One

- Ernie Palmer
- \_\_\_\_\_  
Write-In

#### Wiard Memorial Park

**Director, Position 2**  
Vote for One

- Dennis Wiard
- \_\_\_\_\_  
Write-In

**Director, Position 3**  
Vote for One

- Leanne Fisher
- \_\_\_\_\_  
Write-In

**Director, Position 4**  
Vote for One

- Randy Myrick
- \_\_\_\_\_  
Write-In

#### South Suburban Sanitary

**Director, Position 2**  
Vote for One

- James Bellet
- Kevin Harter
- \_\_\_\_\_  
Write-In

**Director, Position 3**  
Vote for One

- Charles (Charlie) R Dehlinger
- Michael Koger
- \_\_\_\_\_  
Write-In

#### Basin Transit Service District

**Director**  
Vote for Four

- Sandra Fox
- Craig A Fleck
- \_\_\_\_\_  
Write-In
- \_\_\_\_\_  
Write-In
- \_\_\_\_\_  
Write-In
- \_\_\_\_\_  
Write-In

#### Klamath 9-1-1 Emergency Communications

**Director, Zone 4**  
Vote for One

No Candidate Filed

- \_\_\_\_\_  
Write-In

#### Klamath County Measure

Referred to the People by the County Governing Body

**Measure: 18-120**  
**Amendment of Klamath County Transient Room Tax**

**Question:** Shall Klamath County increase Transient Room Tax to 11 percent and apply proceeds to tourism promotion and county services?

**Summary:** Passage of this measure will increase the transient room tax, also known as hotel-motel tax, from 8.0% to 11.0%. Occupants of motels, hotels, RV parks, certain campgrounds, and vacation and home-stay rentals of durations less than thirty days throughout Klamath County will pay this tax. The current revenue allocations and state-mandated administrative fees will remain unchanged. Additional revenue generated from this measure will be distributed as follows: 70% of the revenue to tourism related facilities and promotion with the remaining 30% of the revenue to county services.

- Yes
- No

**UNOFFICIAL**

**THIS IS NOT A REAL BALLOT. DO NOT USE TO VOTE.**

#### Warning

Any person who, by use of force or other means, unduly influences an elector to vote in any particular manner or to refrain from voting is subject to a fine. (ORS 254.470)

**Review Both Sides of Ballot**

**Ballot Drop Sites**  
All locations are open until 8pm  
Election Day

**Klamath County Clerk's Office**  
8:00am-5:00pm, Monday-Friday  
305 Main Street  
Klamath Falls

**Klamath County Gov't Center**  
24 hour drive-up  
(parking lot behind building)  
305 Main Street  
Klamath Falls

**Klamath Basin Senior Center**  
24 hour drive-up  
2045 Arthur Street  
Klamath Falls

**Klamath Community College**  
24 hour drive-up  
7390 S 6th St, New Founders Hall  
Klamath Falls

**Walker Range FPA**  
24 hour drive-up  
135393 U.S. HWY 97  
Crescent

Sample

UNOFFICIAL  
THIS IS NOT A REAL BALLOT. DO NOT USE TO VOTE.

Review Both Sides of Ballot