

Official Special District Ballot

Klamath County, OR

May 18, 2021

Instructions to Voter

Use a **BLUE** or **BLACK** pen to fill in the oval to the left of your choice.

To write in a name that is not listed on the ballot, fill in the oval to the left of the write-in line.

Do not use White Out on ballot.

It is not required to vote all contests, your ballot will still be valid.

Questions? (541) 883-5134.

La Pine RFPD

Director, Position 2
Vote for One

- Doug Cox
- Rex Lesueur
- _____
Write-In

Klamath County Measure

Referred to the People by the County Governing Body

Measure: 18-120
Amendment of Klamath County Transient Room Tax

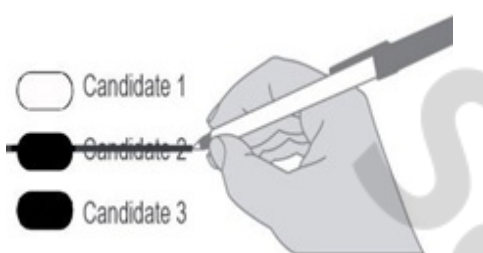
Question: Shall Klamath County increase Transient Room Tax to 11 percent and apply proceeds to tourism promotion and county services?

Summary: Passage of this measure will increase the transient room tax, also known as hotel-motel tax, from 8.0% to 11.0%. Occupants of motels, hotels, RV parks, certain campgrounds, and vacation and home-stay rentals of durations less than thirty days throughout Klamath County will pay this tax. The current revenue allocations and state-mandated administrative fees will remain unchanged.

Additional revenue generated from this measure will be distributed as follows: 70% of the revenue to tourism related facilities and promotion with the remaining 30% of the revenue to county services.

- Yes
- No

How to Correct a Mistake



Klamath County School District

Director, Zone 2
Vote for One

- Laura Blair
- Robert (Bob) Moore
- _____
Write-In

Director, Zone 3
Vote for One

- Leticia Hill
- Jon Hobbs
- Marc Staunton
- Sandy deJong
- _____
Write-In

Director, Zone 5
Vote for One

- Jack L Himmelwright
- Jill O'Donnell
- Ryan Rainville
- _____
Write-In

La Pine RFPD

Director, Position 1
Vote for One

- Jerry Hubbard
- Robin Lillian Adams
- _____
Write-In

Warning

Any person who, by use of force or other means, unduly influences an elector to vote in any particular manner or to refrain from voting is subject to a fine. (ORS 254.470)

UNOFFICIAL

THIS IS NOT A REAL BALLOT. DO NOT USE TO VOTE.

Review Both Sides of Ballot

Ballot Drop Sites
All locations are open until 8pm
Election Day

Klamath County Clerk's Office
8:00am-5:00pm, Monday-Friday
305 Main Street
Klamath Falls

Klamath County Gov't Center
24 hour drive-up
(parking lot behind building)
305 Main Street
Klamath Falls

Klamath Basin Senior Center
24 hour drive-up
2045 Arthur Street
Klamath Falls

Klamath Community College
24 hour drive-up
7390 S 6th St, New Founders Hall
Klamath Falls

Walker Range FPA
24 hour drive-up
135393 U.S. HWY 97
Crescent

Sample

UNOFFICIAL
THIS IS NOT A REAL BALLOT. DO NOT USE TO VOTE.

Review Both Sides of Ballot