

Official Special District Ballot

Klamath County, OR
May 18, 2021

Instructions to Voter

Use a **BLUE** or **BLACK** pen to fill in the oval to the left of your choice.

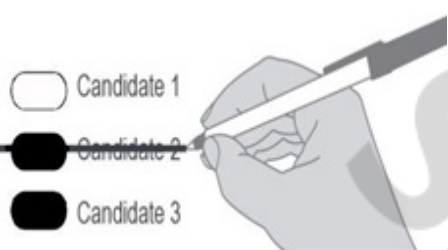
To write in a name that is not listed on the ballot, fill in the oval to the left of the write-in line.

Do not use White Out on ballot.

It is not required to vote all contests, your ballot will still be valid.

Questions? (541) 883-5134.

How to Correct a Mistake



Klamath Community College

Director, Zone 3
Vote for One

Rhoda Keown

Write-In _____

Director, Zone 7, At Large
Vote for One

Richard Harrington

Kaitlin Hakanson

Steven Morton

Jason R Flowers

Write-In _____

Klamath County School District

Director, Zone 2
Vote for One

Laura Blair

Robert (Bob) Moore

Write-In _____

Director, Zone 3
Vote for One

Leticia Hill

Jon Hobbs

Marc Staunton

Sandy de Jong

Write-In _____

Warning

Any person who, by use of force or other means, unduly influences an elector to vote in any particular manner or to refrain from voting is subject to a fine. (ORS 254.470)

Klamath County School District

Director, Zone 5
Vote for One

Jack L Himelwright

Jill O'Donnell

Ryan Rainville

Write-In _____

Malin RFPD

Director, Position 1
Vote for One

Jared Kalina

Write-In _____

Director, Position 2
Vote for One

Dennis Chabot

Write-In _____

Director, Position 3
Vote for One

Laurence Bagg

Write-In _____

Malin Park & Recreation

Director
Vote for Three

Cory L Turner

Jennifer Bartholomew

Dennis J Dunlea

Write-In _____

Write-In _____

Write-In _____

Malin Community Cemetery

Director
Vote for One

Robert Grounds

Write-In _____

Director
Vote for One

Jared Kalina

Write-In _____

Basin Ambulance Service District

Director
Vote for Three

Roger G Taylor

Mike McKeen

Larita Ongman

Write-In _____

Write-In _____

Write-In _____

Klamath County Measure

Referred to the People by the County Governing Body

Measure: 18-120
Amendment of Klamath County Transient Room Tax

Question: Shall Klamath County increase Transient Room Tax to 11 percent and apply proceeds to tourism promotion and county services?

Summary: Passage of this measure will increase the transient room tax, also known as hotel-motel tax, from 8.0% to 11.0%. Occupants of motels, hotels, RV parks, certain campgrounds, and vacation and home-stay rentals of durations less than thirty days throughout Klamath County will pay this tax. The current revenue allocations and state-mandated administrative fees will remain unchanged. Additional revenue generated from this measure will be distributed as follows: 70% of the revenue to tourism related facilities and promotion with the remaining 30% of the revenue to county services.

Yes

No

Review Both Sides of Ballot

Ballot Drop Sites
All locations are open until 8pm
Election Day

Klamath County Clerk's Office
8:00am-5:00pm, Monday-Friday
305 Main Street
Klamath Falls

Klamath County Gov't Center
24 hour drive-up
(parking lot behind building)
305 Main Street
Klamath Falls

Klamath Basin Senior Center
24 hour drive-up
2045 Arthur Street
Klamath Falls

Klamath Community College
24 hour drive-up
7390 S 6th St, New Founders Hall
Klamath Falls

Walker Range FPA
24 hour drive-up
135393 U.S. HWY 97
Crescent

Sample

UNOFFICIAL
THIS IS NOT A REAL BALLOT. DO NOT USE TO VOTE.

Review Both Sides of Ballot